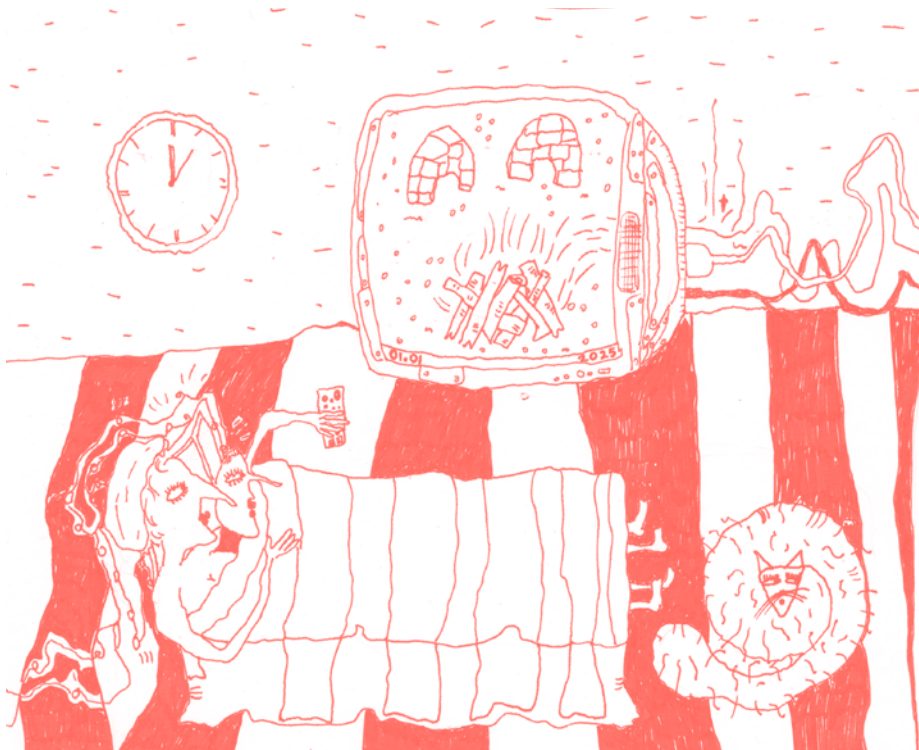




CALENDAR  
2025



# January

M	T	W	T	F	S	S
		1	2	3	4	5
6	7	8	9	10	11	12
13	14	15	16	17	18	19
20	21	22	23	24	25	26
27	28	29	30	31		



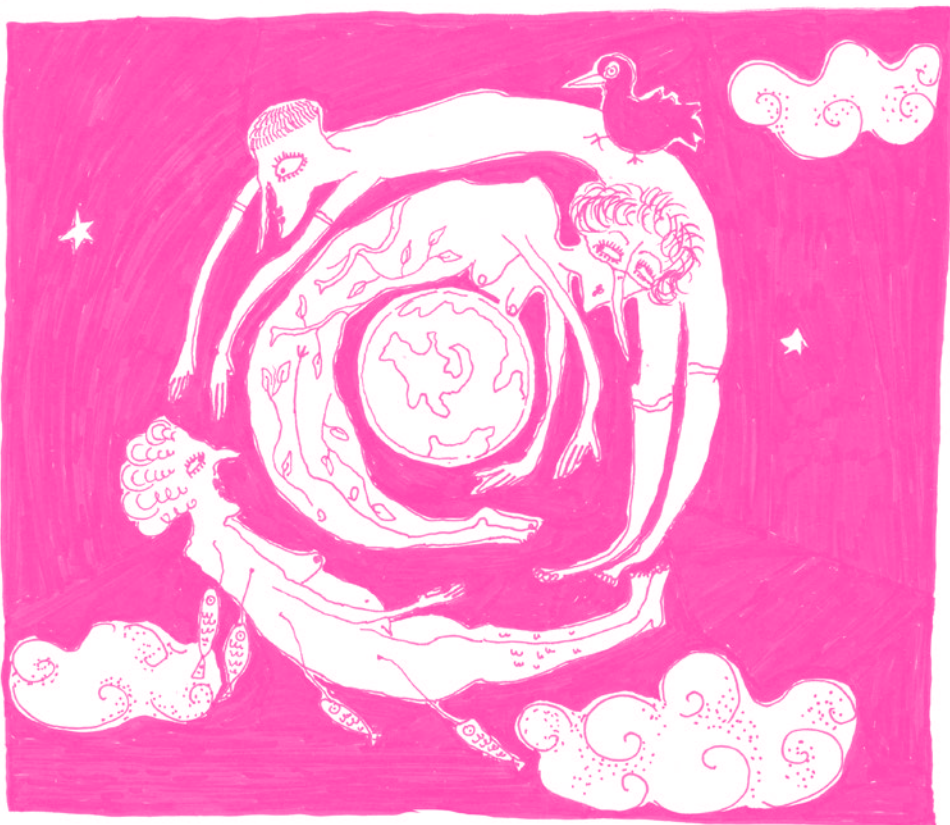
## F e b r u a r y

M	T	W	T	F	S	S
					1	2
3	4	5	6	7	8	9
10	11	12	13	14	15	16
17	18	19	20	21	22	23
24	25	26	27	28		



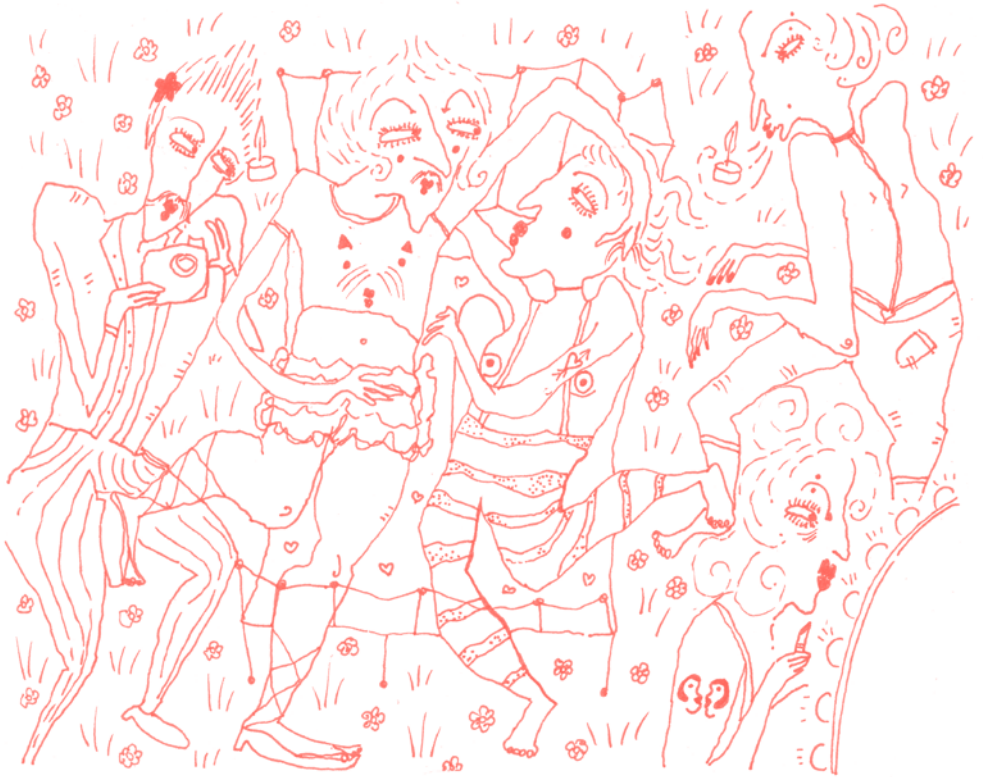
# M a r c h

M	T	W	T	F	S	S
					1	2
3	4	5	6	7	8	9
10	11	12	13	14	15	16
17	18	19	20	21	22	23
24	25	26	27	28	29	30
31						



# A p r i l

M	T	W	T	F	S	S
	1	2	3	4	5	6
7	8	9	10	11	12	13
14	15	16	17	18	19	20
21	22	23	24	25	26	27
28	29	30				



# M a y

M	T	W	T	F	S	S
			1	2	3	4
5	6	7	8	9	10	11
12	13	14	15	16	17	18
19	20	21	22	23	24	25
26	27	28	29	30	31	



# J u n e

M	T	W	T	F	S	S
						1
2	3	4	5	6	7	8
9	10	11	12	13	14	15
16	17	18	19	20	21	22
23	24	25	26	27	28	29
30						



# July

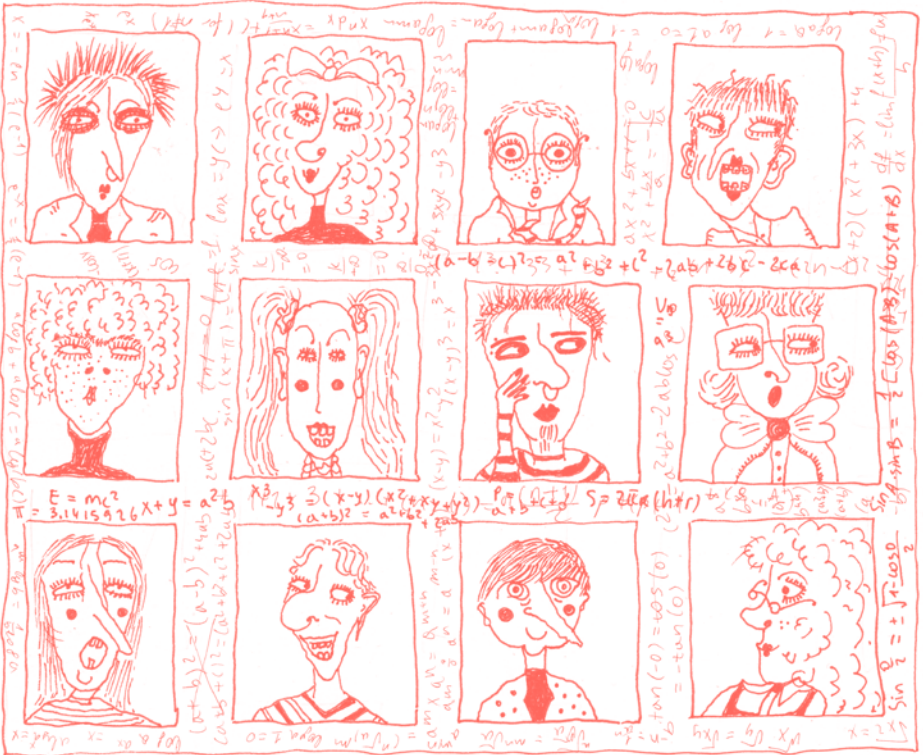
M	T	W	T	F	S	S
	1	2	3	4	5	6
7	8	9	10	11	12	13
14	15	16	17	18	19	20
21	22	23	24	25	26	27
28	29	30	31			





# A u g u s t

M	T	W	T	F	S	S
				1	2	3
4	5	6	7	8	9	10
11	12	13	14	15	16	17
18	19	20	21	22	23	24
25	26	27	28	29	30	31



# S e p t e m b e r

M	T	W	T	F	S	S
1	2	3	4	5	6	7
8	9	10	11	12	13	14
15	16	17	18	19	20	21
22	23	24	25	26	27	28
29	30					



# O c t o b e r

M	T	W	T	F	S	S
		1	2	3	4	5
6	7	8	9	10	11	12
13	14	15	16	17	18	19
20	21	22	23	24	25	26
27	28	29	30	31		



# N o v e m b e r

M	T	W	T	F	S	S
					1	2
3	4	5	6	7	8	9
10	11	12	13	14	15	16
17	18	19	20	21	22	23
24	25	26	27	28	29	30



## D e c e m b e r

M	T	W	T	F	S	S
1	2	3	4	5	6	7
8	9	10	11	12	13	14
15	16	17	18	19	20	21
22	23	24	25	26	27	28
29	30	31				

---

# Our imagination, too, is real.

HEINRICH BÖLL

---

Artworks  
Printed in risography  
Press run

NJË DOMATE  
OLSI HOXHA  
200

NJË DOMATE IS A FEMINIST ARTIST, BASED IN  
TIRANA. KNOWN FOR HER SPONTANEOUS AND  
PLAYFUL CREATIONS. WORKING WITH OIL PASTELS  
INK, AND MIXED MEDIA, SHE CRAFTS IMPERFECT  
PIECES THAT CHALLENGE CONVENTIONAL BEAUTY  
AND INSPIRE UNFILTERED SELF-EXPRESSION.

@NJËDOMATE

This publication is handmade and Riso printed with soy-based ink. Riso printing is a sustainable and energy efficient print process. Each print may vary slightly, making each one-off and unique.

Offsetting may occur, the imperfections we think add charm.

A publication by Heinrich Böll Stiftung e. V., Tirana Office.

 **HEINRICH BÖLL STIFTUNG**  
The Green Political Foundation  
TIRANA